

THE WORLDS FINEST ENERGY PRODUCING ROOF TILE



GREY



TERRACOTTA

The integration of humble concrete roof tiles with high efficiency monocrystalline photovoltaic cells ensures the combination of aesthetic beauty & functional power.

Installed around the globe, this innovative solar tile paves the way in residential building integrated Photovoltaics (BIPV).

No Longer do architects need to choose between aesthetics and efficiency.

www.pluginsolar.co.uk
info@pluginsolar.co.uk
01444 672005

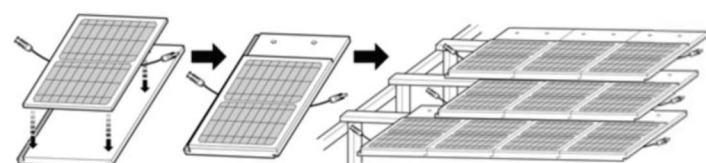


WHAT IS THE ERGOSUN TILE?

ergosun Integrated Solar Roof Tiles are a breathtaking solarized roof tile, designed to integrate with traditional cement or clay roofing tiles and be installed in residential applications. They maintain the aesthetic look and elegance of the home while providing clean, green energy.

SIMPLE INSTALLATION

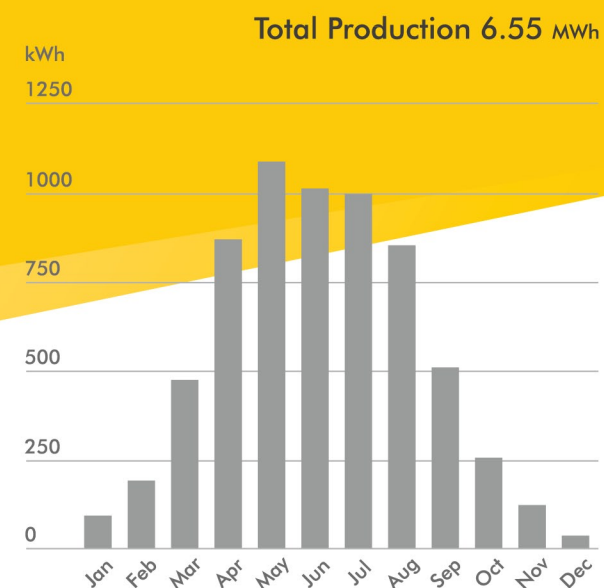
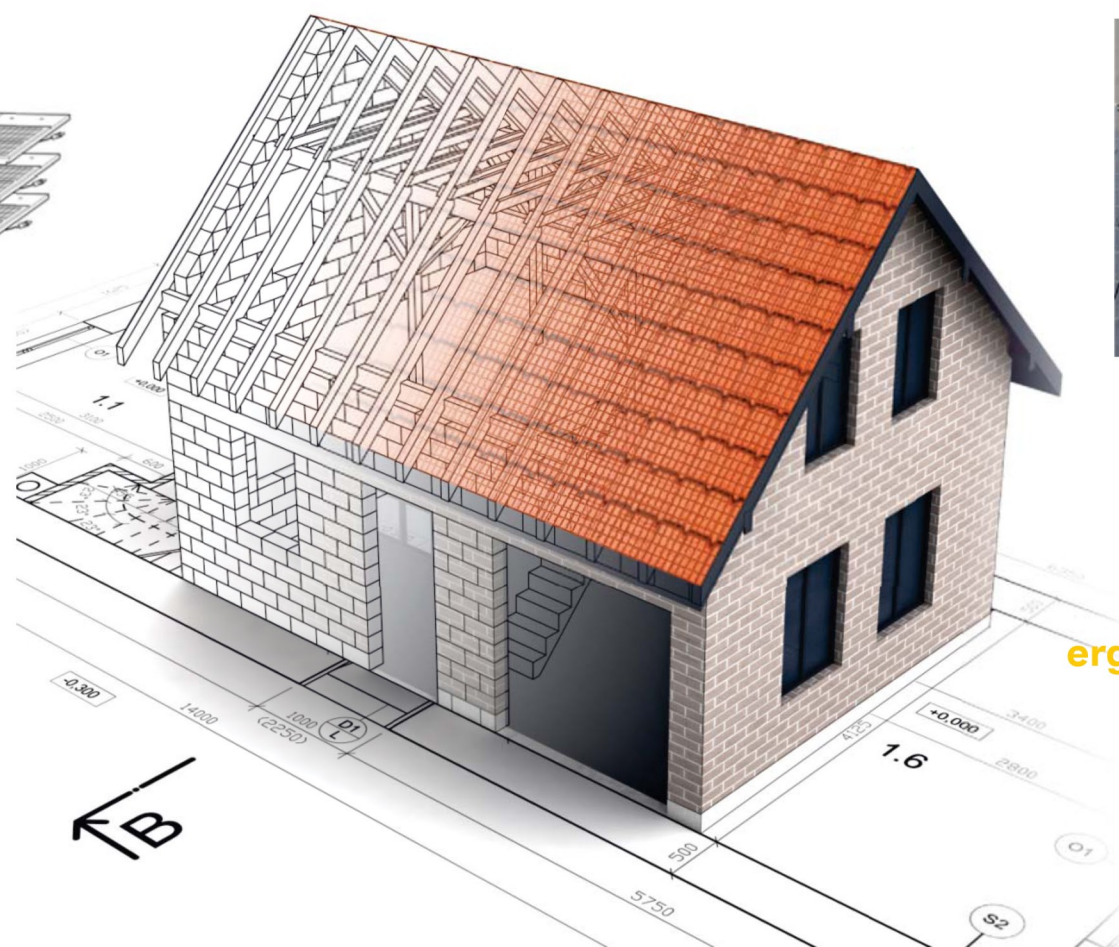
ergosun modules use a specialized adhesive to bond to the face of traditional roof tiles for the life of the product. These completed modules can then be installed with standard roofing methods, meaning no special contractors are required. The tiles are simply plugged in to the next across the face of the roof with the wires protected between the roof deck and roof tiles.



CHARCOAL



TERRACOTTA



KEY BENEFITS

INVISIBLE FINISH

Available in charcoal or terra cotta colours to match the finish of the rest of the roof, ergosun Integrated Roof Tiles offer maximum aesthetic appeal.

UTILISE UP TO 98% OF THE ROOF

ergosun is a perfect solution for complicated roof lines, able to install around skylights, dormers, and other roof furniture that large panels cannot avoid.

TRUE BUILDING INTEGRATION

As an integrated part of the roof, this tile does not require any framing, brackets, or clamps to fix your system to your home. This reduces labour time for installing and minimises the chance for water ingress.

MAXIMISE GENERATION HOURS

Designed to generate voltage even during low light conditions, ergosun tiles maximise the generation potential of your roof.



Call us today to find out how
ergosun Integrated Solar Roof Tiles can power your future!

01444 672005
info@pluginsolar.co.uk

SPECIFICATION

SUBSTRATE	CONCRETE OR CLAY
MODULE SIZE	11.81" x 13.46" 300mm x 342mm (adjustable)
NUMBER OF CELLS / MODULE	18
NUMBER OF TILES / SQ. METER	10
MODULE THICKNESS	3.6mm
MAX POWER DETERMINATION	
PER SOLAR TILE	9V @ 1.5 amps
TEMP	25°C 77°F
VOC (V)	12.2
VMP (V)	9.0
ISC (A)	1.2
IMP (A)	1.45
PMP (W)	13
CURRENT TEMP. COEFFICIENT % DEG. C	0.05%
OPEN CIRCUIT VOLT. TEMP. COEFFICIENT % DEG.C	0.35%
OUTPUT TEMP. COEFFICIENT % DEG. C	0.35%
ROOFING	
BATTEN SPACING	13.58" 345mm
PROTECTION	
BYPASS DIODE / TILE	FUSED STRING
CONNECTIONS	
TILES IN SERIES	2 x MC4 CONNECTORS (MALE & FEMALE)
SYSTEM DESIGN VOLTAGE	600 VDC MAX

OTHER BENEFITS

- True Integration:** No framing or mounting are required.
- Lightweight:** Less than 3kg per M2 so No need for extra structural calculations.
- Seamless design:** No special roof tiles. Our solar cells are bonded bespoke to most flat concrete roof tiles, no need to choose from a limited range.

Certifications: IEC 61215 / IEC 61730 / MCS005 & MCS012

Warranty: 10 year product warranty / 25 year 80% power output performance guarantee

External Fire rating: Exposure test to BS476-3:2007, AB Rating