

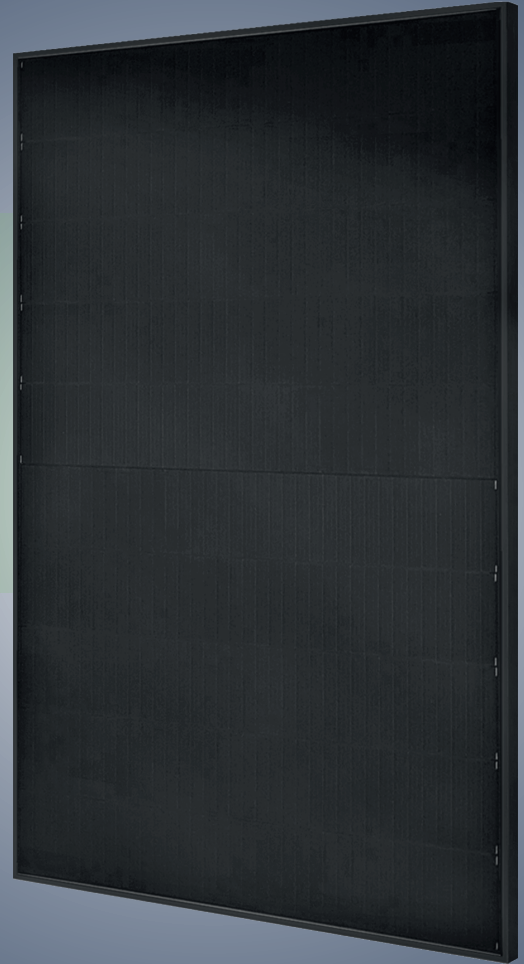


PERLIGHT
smart.black

PLM-400OM2B-66

400W DELTA SERIES

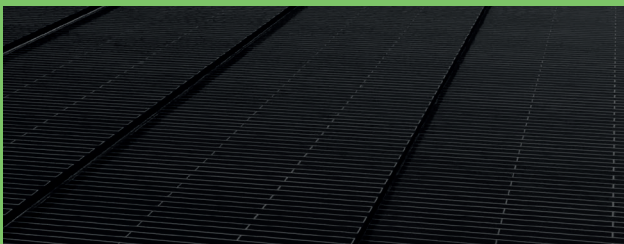
Monocrystalline PERC solar module



15 YEAR WORKMANSHIP WARRANTY

25 YEAR LINEAR POWER OUTPUT WARRANTY

✔ ZERO BUSBAR RIBBON TECHNOLOGY



✔ NO CELL BUSBAR RIBBONS

✔ HIGH DENSITY LAYOUT

✔ INCREASED CELL SURFACE AREA

✔ GREENER TO THE ENVIRONMENT

Fluorine-free and low Pb levels, 60% less than conventional modules. Saving 0.3kg of metal ribbon per module by removing cell busbars

✔ BEAUTIFUL APPEARANCE

Ultra-sleek with consistent tone provides a modernised look

✔ PERFORMANCE

Outperforms conventional half-cell technology under shaded conditions, lower operating temperature and more

✔ SAFETY AND RELIABILITY

Lower operating temperature and exceptional performance under mechanical and thermal stress dramatically reduces risks of micro-cracks and hot-spots, improving performance and prolonging module life



400W DELTA SERIES

Electrical Characteristics at Standard Test Conditions(STC)

Module Type: PLM-***OM2B-66	400	395	390
Maximum Power-Pm [W]	400	395	390
Open Circuit Voltage-Voc [V]	49.5	49.4	49.3
Short Circuit Current-Isc [A]	10.12	10.07	10.03
Maximum Power Voltage-Vm [V]	41	40.9	40.8
Maximum Power Current-Im [A]	9.76	9.66	9.56
Module Efficiency-η [%]	21.3	21.1	20.8

Electrical Characteristics at NMOT

Maximum Power-Pm [W]	301	297	294
Open Circuit Voltage-Voc [V]	47.2	47.1	47.0
Short Circuit Current-Isc [A]	8.15	8.11	8.08
Maximum Power Voltage-Vm [V]	39.1	39.0	38.9
Maximum Power Current-Im[A]	7.71	7.63	7.55

Note: 1. Standard Test Conditions(STC): Irradiance 1000W/ m²; AM 1.5; ambient temperature 25°C according to EN 60904-3;
2. Nominal Module Operating Temperature (NMOT): Irradiance 800W/ m²; wind speed 1m/s; ambient temperature 20°C.
3. Tolerance of Pm: 0~+5W. Measuring uncertainty of power: ±3%. Performance deviation of Voc [V], Isc[A], Vm[V] and Im[A]: ±3%.

Temperature Characteristics

NMOT	42.3°C(±2°C)
Temperature Coefficient of Voc	-0.27%/°C
Temperature Coefficient of Isc	0.04%/°C
Temperature Coefficient of Pm	-0.34%/°C

Maximum Ratings

Maximum System Voltage [V]	DC 1500/1000 (IEC)
Series Fuse Rating [A]	20
Maximum Surface Load Capacity [Pa]	5400
Temperature Range [°C]	-40 ~ +85
Withstanding Hail	Maximum diameter of 25mm with impact speed of 23 m·s ⁻¹

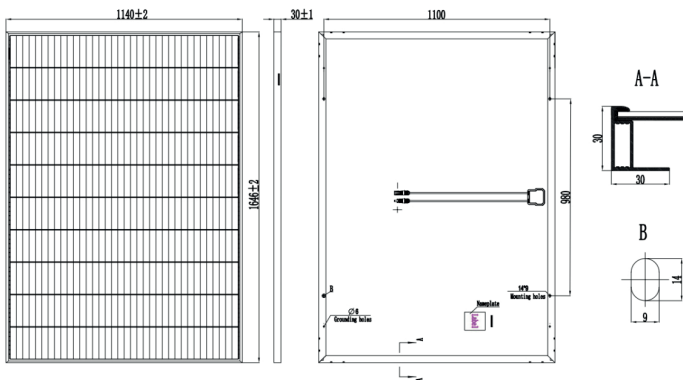
Package

Container	40' HQ
Number of pallets per container	28
Number of modules per container	1008

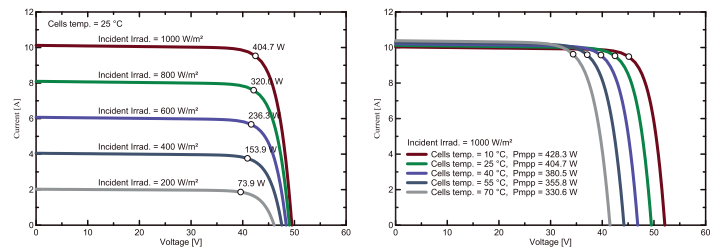
Mechanical Characteristics

Dimensions	1646×1140×30mm (L×W×H)
Weight	19kg
Front Glass	AR coating tempered glass, 3.2mm
Frame	Anodized aluminum profile
Cells	Mono-crystalline solar cell
Cell Orientation	360 (36°*10)
Junction Box	IP68, two diodes
Cable	4mm ² , 1000mm (other lengths available)

Module Diagram

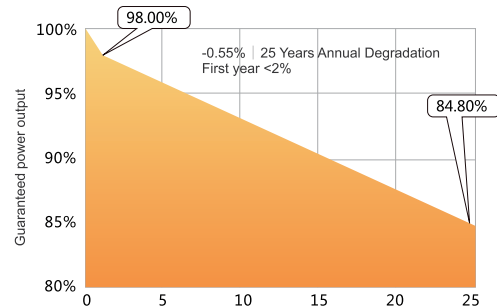


I-V curve



Warranty

15 YEAR WORKMANSHIP WARRANTY
25 YEAR LINEAR POWER OUTPUT WARRANTY



COMPLETE SYSTEM AND PRODUCT CERTIFICATIONS

- IEC 61215/61730 IEC62804(PID) IEC61701 (Salt) IEC62716(Ammonia)
- ISO 9001:2015 / Quality management System
- ISO 14001 :2015 / Environmental management System
- ISO 45001:2018 / Occupational health and safety Management System
- ISO 50001 :2011 / Energy management Systems
- IEC TS 62941-2016 / Photovoltaic industry Quality management System



+44 (0)1865 682 584
info@westtech-solar.co.uk
www.westtech-solar.co.uk

Westech Solar (UK) Ltd
Unit 1, Bobby Fryer Close,
Garsington Road, Oxford,
OX4 6ZN, UK